

INSECTS IN AND AROUND YOUR HOUSE

OUTDOOR:

KOINOR | MIKKA |
TROJAN ANT BAIT |
ORGANICIDE |
ORGANICIDE PLUS

INDOOR/OUTDOOR:
ALPHA-THRIN |
ROSSI | LAMBDA

ANTS



FLIES



ALPHA-THRIN | ROSSI |
LAMBDA

BEDBUGS | FLEAS



ALPHA-THRIN | ROSSI |
KARBA 850 | KARBA 50

COCKROACHES



ALPHA-THRIN | ROSSI |
LAMBDA

MOSQUITOES



ALPHA-THRIN | ROSSI |
LAMBDA

FISH MOTHS



ALPHA-THRIN | ROSSI |
LAMBDA

SPIDERS



ROSSI

APHIDS AND SUCKING INSECTS

ANTESTIA BUG



SERVUS

APHIDS: CONIFER



KOINOR

APHIDS: MEALY (CABBAGE)



KOINOR

APHIDS: VARIOUS



ORGANICIDE | PLANT CARE |
KOINOR | ROSE PROTECTOR |
ORGANICIDE PLUS

AUSTRALIAN BUG



MIKKA

MEALY BUG



KARBA 50 | KARBA 850 |
MIKKA | TRIVOR

PSYLLA



KOINOR

RED SCALE



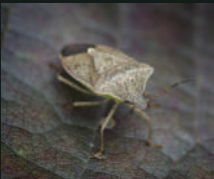
KOINOR | SK ECO OIL |
MIKKA | TRIVOR

RED SPIDER MITE



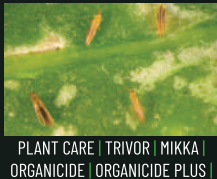
SK ECO OIL | PLANT CARE |
SEIZER 100 | ORGANICIDE |
SULFOSTAR | ROSE PROTECTOR |
ORGANICIDE PLUS | MIKKA

STINK BUG



CYPER

THRIPS



PLANT CARE | TRIVOR | MIKKA |
ORGANICIDE | ORGANICIDE PLUS |
SERVUS | SULFOSTAR | CYPER

WHITEFLIES | -NYMPHS



KOINOR | PLANT CARE |
ORGANICIDE | ORGANICIDE PLUS

INSECTICIDES



ALPHA-THRIN



CYPER



KARBA 50



KARBA 850



LAMBDA KILL

NEW PRODUCT!



MIKKA



MIKKA



PLANT CARE



ROSSI



SEIZER 100



SERVUS & SERVUS RTU



CITRUS NOTE 1: Apply Koinor once per season at the green tip to the white blossom stage, usually late August to September. All existing fruit should be removed before application.
CITRUS NOTE 2: If you missed the blossom stage (tree already has fruit), apply Organicide Plus or Sk Eco Oil Spray. **CITRUS NOTE 3:** Use Trivor (with Picanta) for an easy full-cover spray application.



KOINOR



SK ECO OIL



TRIVOR



TROJAN ANT BAIT



SNAILSPRAY



SNAIL BAIT

ORGANIC INSECTICIDES



ECOBAIT



ORGANICIDE



ORGANICIDE PLUS



SULFOSTAR

FUNGICIDES

PRODUCT NOTE: Odeon or Orius?

Both are broad-spectrum fungicides with excellent preventative and corrective control. Odeon is safer for most crops and plants as it is not an oil-based or systemic product. Orius is systemic, so larger plants and trees can easily be treated, as spraying the whole plant is unnecessary.



ORIOUS & ORIOUS RTU



CHRONOS



COPSTAR



ODEON

STICKER:

Picanta, a terpenic polymer sticker adjuvant designed to control the effective lifespan of (SL/EC formulation) insecticides, herbicides, fungicides and foliar fertilizers. This will form a durable elastic film on the spray deposit that will encapsulate the agro-chemical on the crop foliage.



PICANTA

3-IN-1 PROTECTION

3 in 1 combination products that consists out of two fungicides (Bupirimate and Propiconazole) and one insecticide (Bifenthrin).

Use **Rose Protector** for a quick and easy solution to control fungi and aphids on your roses.

Unsure whether it is fungi or insects in your lawn? Use **Lawn Protector**. It controls both!



ROSE PROTECTOR & RTU



LAWN PROTECTOR



PROBLEMS SOLUTIONS

IDENTIFY YOUR PROBLEM BY IMAGE OR NAME AND SOLVE YOUR GARDENING PROBLEMS WITH OUR ADVISED PRODUCTS.



STILL NOT SURE? CONTACT US! WWW.MAKHRO.CO.ZA



Company Registration Number: 2014/283523/07

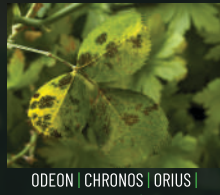
FUNGUS IN YOUR GARDEN

ANTHRACNOSE



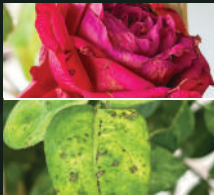
ODEON | CHRONOS

BLACK SPOT



ODEON | CHRONOS | ORIOUS | ROSE PROTECTOR | COPSTAR

BOTRYTIS LEAF SPOT



ODEON

BOTRYTIS ROT (GREY MOULD)



ODEON

BROWN PATCH



LAWN PROTECTOR

DOLLAR SPOT



ODEON | ORIOUS | LAWN PROTECTOR

DOWNY MILDEW



ODEON | COPSTAR

EARLY BLIGHT



ODEON | ORIOUS | COPSTAR

FRUIT SPOT



COPSTAR

LATE BLIGHT



ODEON | COPSTAR

LEAF CURL



COPSTAR

NAVEL-END ROT (ALTERNARIA SPOT)



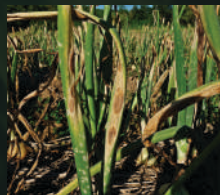
ORIOUS | COPSTAR

POWDERY MILDEW



ORIOUS | CHRONOS | ROSE PROTECTOR | SULFOSTAR

PURPLE BLOTCH



ORIOUS

RUST



ODEON | ORIOUS | COPSTAR | ROSE PROTECTOR | SULFOSTAR

USE PRODUCTS ONLY AS DIRECTED, FOLLOW INSTRUCTIONS AS PER LABEL. ALL PRODUCTS: ACT 36 OF 1947, ALPHA-THRIN PEST KILL: L9441, CYPERMETHRIN 200 EC: L4644, ECOBAIT: L10845, KARBA 850 WP: L1195, KARBA 50 DP: L1081, KOINOR 350 SC: L8562, LAMBDA KILL 106 CS: L9264, MIKKA 500 EC: L10271, ORGANICIDE: L9579, ORGANICIDE PLUS: L9558, PLANT CARE: L9696, ROSSI 200 SUPER: L8376, SEIZER 100 EC: L7471, SERVUS: L7271, SERVUS RTU: L8420, SK ECO OIL SPRAY: L8443, SNAILSPRAY: L7894, SNAIL BAIT: L7096, SULFOSTAR: L6982, TRIVOR: L10879, TROJAN ANT BAIT: L8999, CHRONOS 450 SC: L7276, COPSTAR 120 SC: L7026, ODEON 720 SC: L7596, ORIOUS 250 EW: L6832, ORIOUS RTU: L8302, ROSE PROTECTOR: L8114, ROSE PROTECTOR RTU: L8631, LAWN PROTECTOR: L10290, PICANTA: L8871, HALO 750 WDG: L8283, LAWNTYL 500 SC: L8357, MCPA 400 SL: L5793, SUPER LAWNWEEDER: L4370, LAWN CARE SUPER RTU: L11131, EXPYRT 480 EC: L10282, SCAT 360 SL (GLYPHOSATE): L5716, NO MORE WEEDS RTU: L8108, GROBEST: B3863, TURBO-K: K9289, MULTI-BOOSTER: K7046, GO ORGANIC: B3839.

WEEDS, LAWNS & HERBICIDES

There are so many different types of weeds. Knowing which herbicide to buy can be confusing. Don't worry! We will make it easy for you to identify what herbicide you need.



HALO



- Granular weed killer.
- Conveniently pre-measured.
- Controls Nutsedge and other types of broadleaf weeds in lawns.



LAWNTYL



- The only with the combination of pre- and post-emergence weed control.
- Prevents weed germination.
- Controls winter grass (poa annua), and other types of broadleaf weeds in lawns.

ONLY USE LAWNTYL ON: KIKUYU, BUFFALO GRASS AND QUICK GRASS.



MCPA

- Economical option.
- Safer to use in less established lawns.
- It causes milder grass yellowing.
- Perfect solution for smaller weeds.
- Control broadleaf weeds in lawns.



SUPER LAWNWEEDER & LAWN CARE SUPER RTU

- Broadest weed control spectrum with three active ingredients.
- Great for the tougher weeds.
- It is recommended for use in well-established lawns.
- Control broadleaf weeds in lawns.



WEEDS IN NON-PLANTED AREAS, PAVING AND PATHWAYS



GLYPHOSATE & RTU



UNWANTED TREES AND STUMP REMOVAL



EXPYRT



FERTILIZERS



GROBEST



TURBO-K



MULTI-BOOSTER



GO ORGANIC

LAWN TIP 2: We recommend that you always apply herbicides to a healthy lawn. To ensure that your lawn is and stays healthy, we recommend that you irrigate it regularly in combination with fertilizing at least two weeks before the application of herbicides. You can use any of our available fertilizers for your lawn and garden.

LAWN TIP 3: Unsure whether it is fungi or insects in your lawn? Use **Lawn Protector**. It controls both!

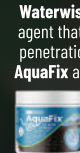
LAWN TIP 3: For corrective control and long residual in soil against seed germination:

Use Lawntyl in combination with broadleaf weed killers like Super Lawnweeder or MCPA. Contact us for more information if you want to combine the products mentioned above.

WATER SAVERS!



WATERWISE 3D



AQUAFIX

Waterwise3D is a wetting agent that assists in water penetration and retention. **AquaFix** absorbs water and nutrients and slowly releases them to the plant's root zone.

INSECTS EATING YOUR PLANTS

BETTER: ASTYLUS | CMR



MIKKA | ORGANICIDE | ORGANICIDE PLUS

BEEBLE: FLOWER



KARBA 850

BOLLWORMS



PLANT CARE | KARBA 50 | CYPER | KARBA 850 | SEIZER 100 | ORGANICIDE PLUS | SERVUS

CATERPILLARS



LAWN PROTECTOR | KARBA 50 | CYPER | SERVUS | KARBA 850 | MIKKA

CHILO- | STALK BORER



SERVUS | CYPER

CUTWORMS



SERVUS | CYPER

FRUIT FLY



SERVUS | CYPER

LEAF MINER (TUBER MOTH)



KOINOR | SEIZER 100 | SERVUS

LILY BORER



SERVUS

MOLE CRICKETS



LAWN PROTECTOR | KOINOR

MOTH: CODLING



SERVUS | CYPER | KARBA 850

MOTH: DIAMOND-BACK



SERVUS | CYPER

SEMI-LOOPER



SEIZER 100

SNAILS AND SLUGS



SNAILSPRAY | SNAIL BAIT | ECOBAIT

TERMITES: NORTHERN HARVESTER



KOINOR

TERMITES: WOOD-EATING



ORGANICIDE PLUS

WEEVILS (SNOUT BEETLES)



SERVUS | MIKKA | CYPER

WHITE GRUB | -LARVE



PLANT CARE